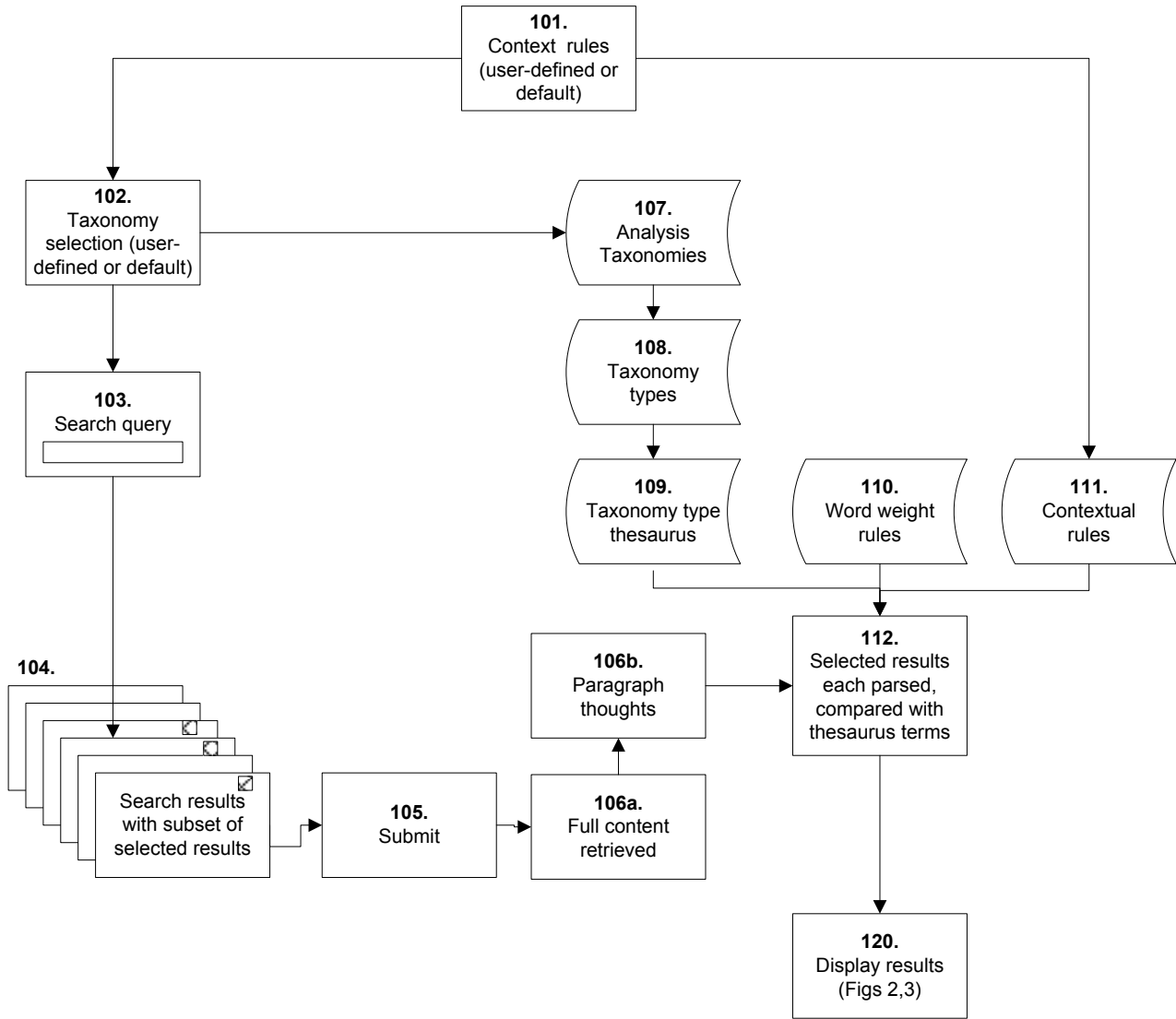


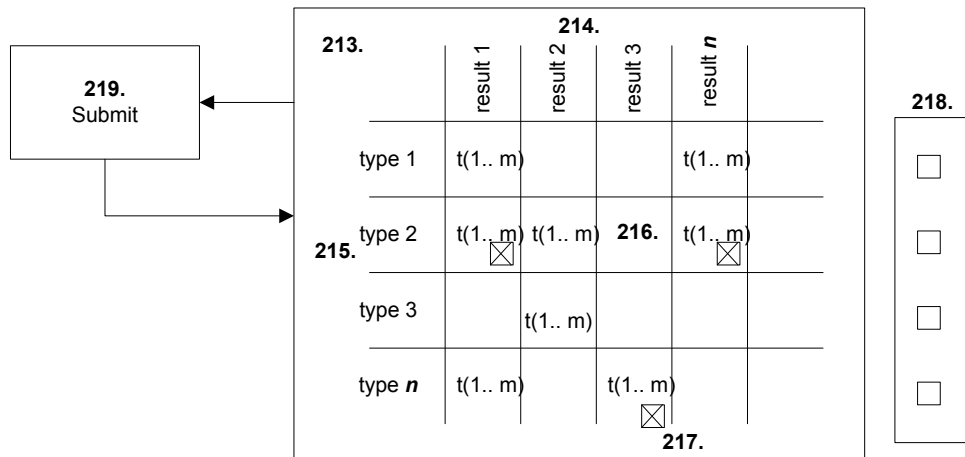
# METHODS AND APPARATUS FOR CONTENT SEARCH USING LOGICAL RELATIONSHIP TAXONOMIES

Fig. 1



METHODS AND APPARATUS FOR CONTENT SEARCH  
 USING LOGICAL RELATIONSHIP TAXONOMIES

Fig. 2



**METHODS AND APPARATUS FOR CONTENT SEARCH  
USING LOGICAL RELATIONSHIP TAXONOMIES**

Fig. 3

**315.**

<b>330.</b> Type 1	<b>331.</b> Type 2	<b>332.</b> Type 3	<b>333.</b> Type <i>n</i>
-----------------------	-----------------------	-----------------------	------------------------------

**370.**

**316.**

**334.**  
Thought 1

**335.**  
Thought 2

**336.**  
Thought 3

**337.**  
Thought *n*

Reconstruct
Reflect

**338.**  
  
 **339.**  
  
 **340.**  
  
 **341.**

**351.**  
  
 **352.**  
  
 **350.**  
  
 **354.**

**360.**

Rating - logical
 **361.**

Rating - factual
 **362.**

Rating - quality
 **363.**

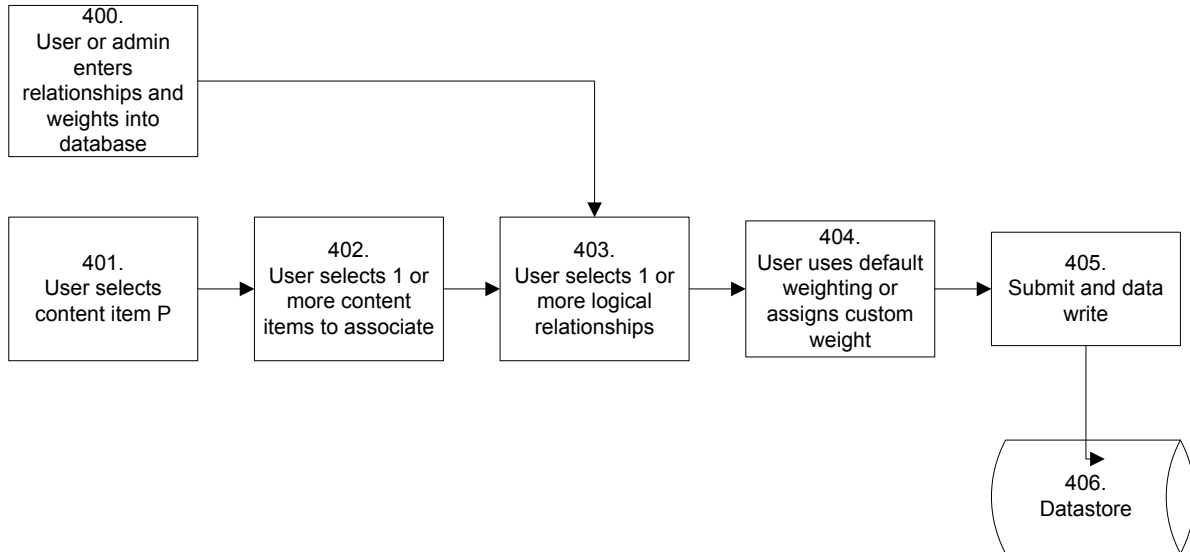
Publish
 **364.**

**348.**  
Submit

**358.**  
Submit

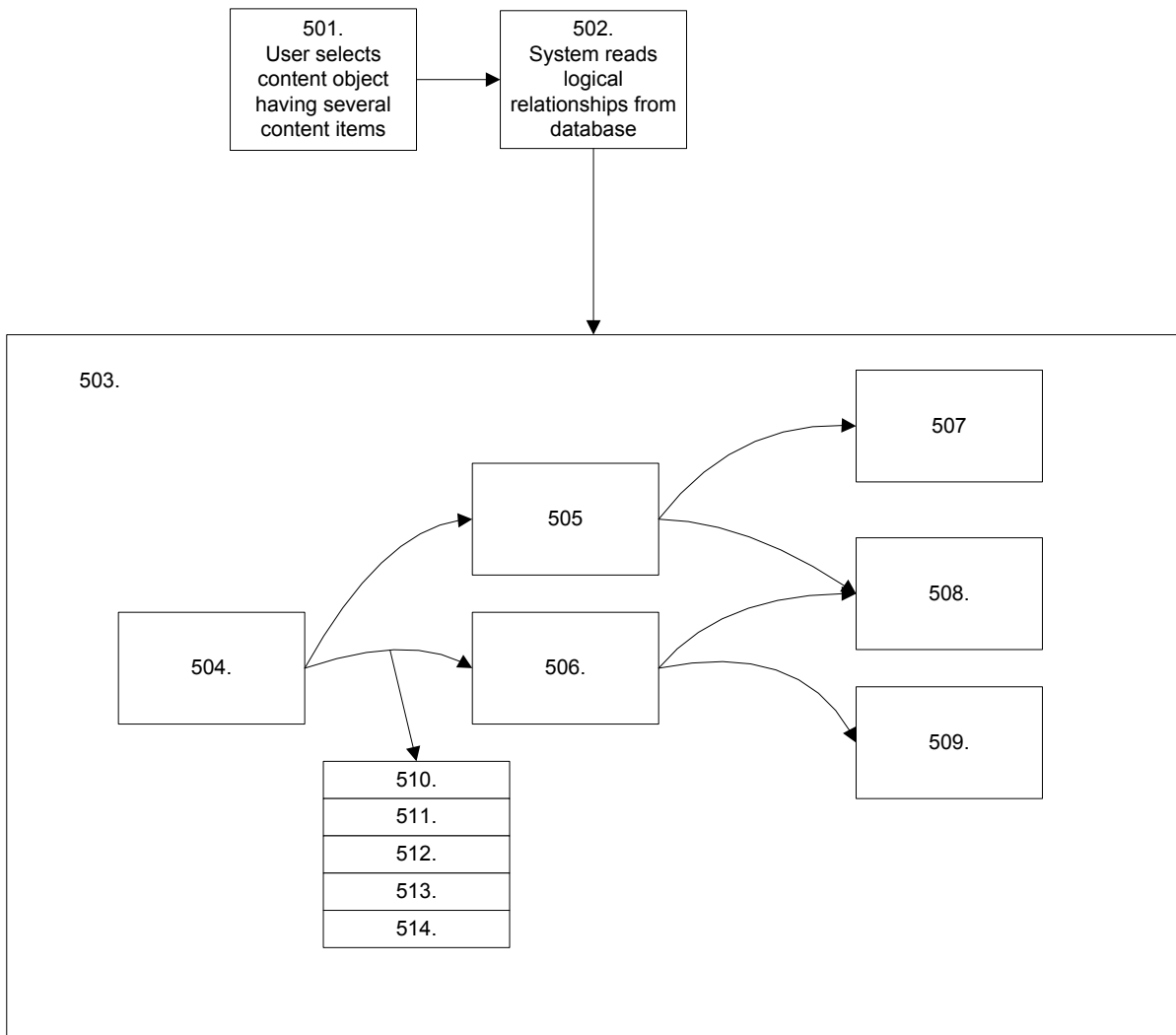
**METHODS AND APPARATUS FOR CONTENT SEARCH  
USING LOGICAL RELATIONSHIP TAXONOMIES**

Fig. 4



**METHODS AND APPARATUS FOR CONTENT SEARCH  
USING LOGICAL RELATIONSHIP TAXONOMIES**

Fig. 5



# METHODS AND APPARATUS FOR CONTENT SEARCH USING LOGICAL TAXONOMIES AND RELATIONSHIPS

Fig. 6

